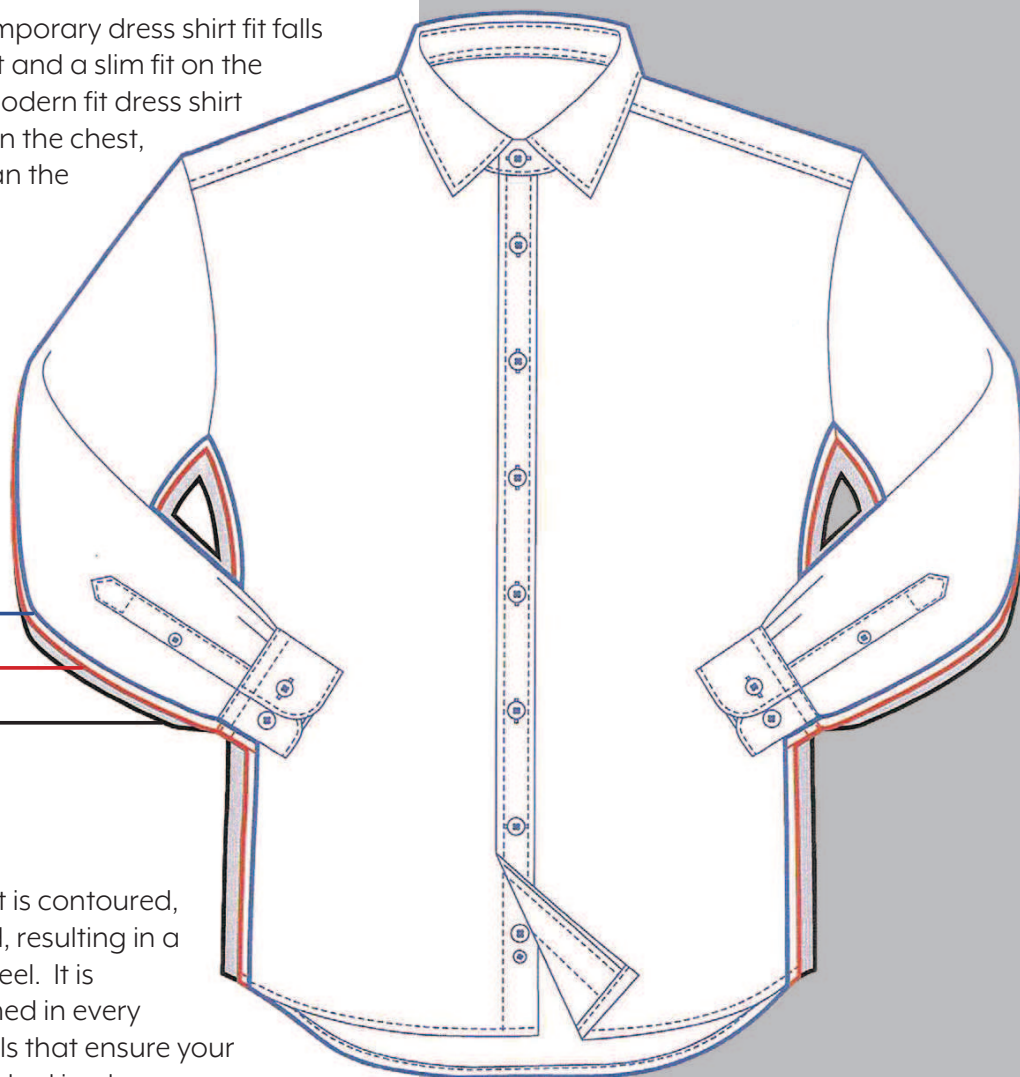


FORSYTH SHIRT DEFINITIONS

△ Modern Fit

The modern/contemporary dress shirt fit falls between a classic fit and a slim fit on the tightness scale. A modern fit dress shirt is slightly narrower in the chest, waist, and arms than the tailored fit.



○ Tailored Fit

Our Tailored Fit shirt is contoured, yet not fully tapered, resulting in a made-to-measure feel. It is perfectly proportioned in every aspect including tails that ensure your shirt stays neatly tucked in place with no excess fabric bulk.

□ Traditional Fit

It's a slightly boxier construction than contemporary tailored shirts, but does have the advantage of accentuating the upper body by giving it a crisper shoulder-line and fuller torso. By contrast, 'fitted' shirts have sloping tapered edges.

Forsyth